



The City of Othello

500 East Main Street OTHELLO, WASHINGTON 99344 Telephone (509) 488-5686
Fax (509) 488-0102

April 21, 2021

TO: All Planholders – Ash Street Safety Improvements
HLP-SR19(011)

Re: Addendum #1

Enclosed please find Addendum #1, consisting of 1 page and three Plan sheets, to the Ash Street Safety Improvements project documents. Please note carefully the changes, sign, and return this page at the time of bidding. Your signature on this page indicates you have received the entire addendum.

If you have any questions, feel free to contact me at sobrien@othellowa.gov or 509-331-2711.

Sincerely,

Shawn O'Brien, PE
City Engineer
City of Othello

Enc:

Name of Firm _____

By _____ Title _____

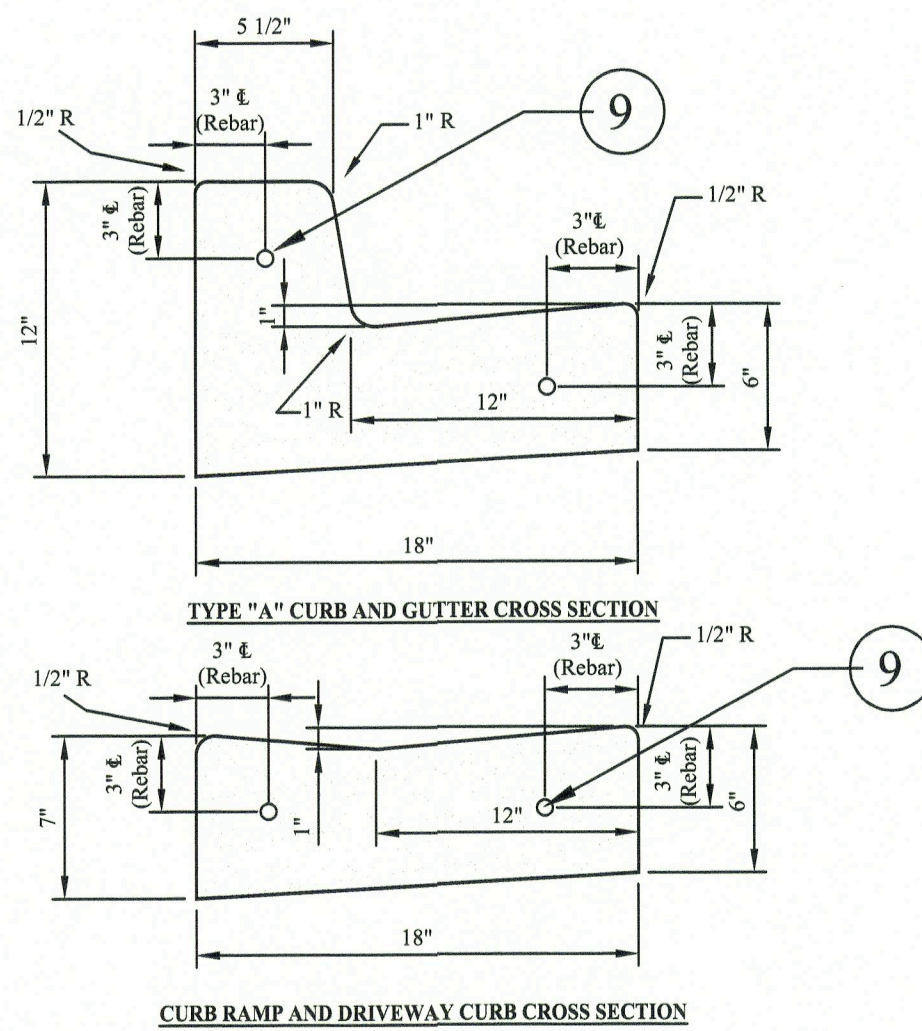
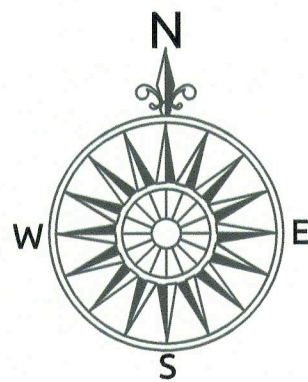
**ASH STREET SAFETY IMPROVEMENTS
ADDENDUM NO. 1**

The following changes have been made to the proposal, specifications, and plans for the above-named project. Please incorporate the following information into your bid.

The cover page for this addendum sheet **must** be signed and returned with your proposal at the time set for the bid opening.

PLANS

SHEET 9 of 11 - *Replace Sheet 9 of the Plans with the attached Sheets 9, 12, and 13 of the addendum. A patching detail has been added and the details have been enlarged to make them more readable.*



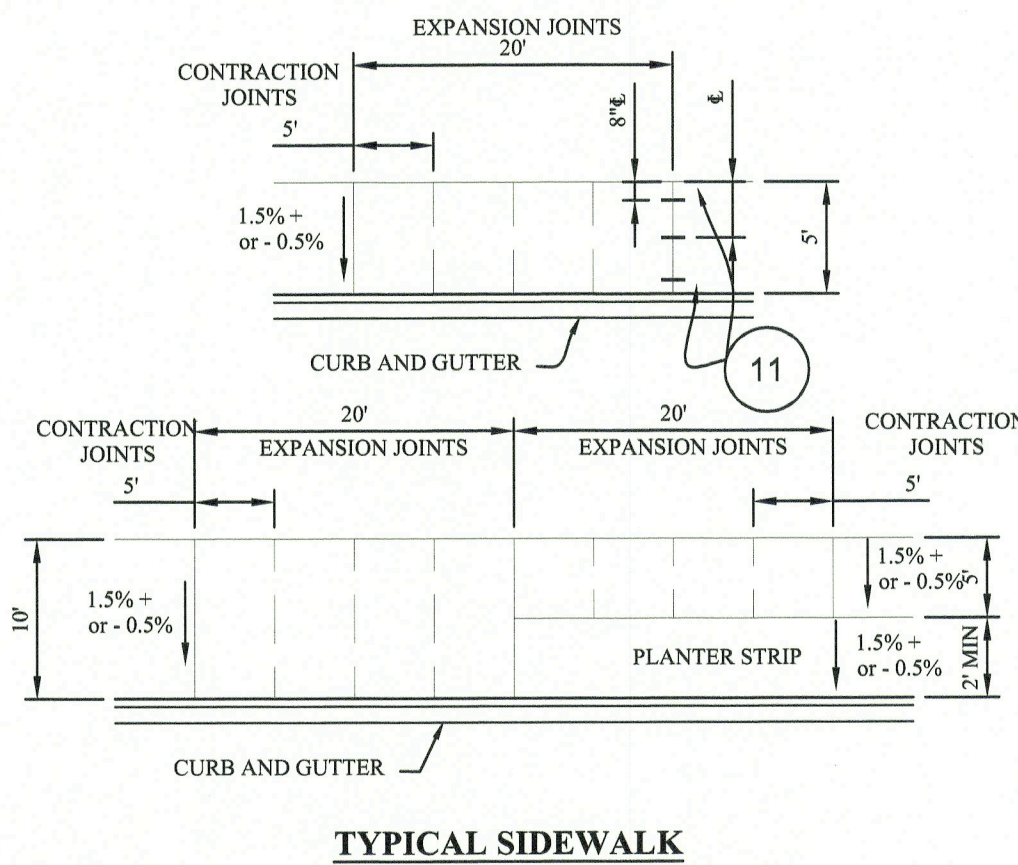
TYPICAL CURB AND GUTTER

NOTES:

- FULL-DEPTH EXPANSION JOINTS SHALL BE PLACED AT 100' INTERVALS AND AT POINTS OF TANGENCY. PRE-MOLDED JOINT FILLER SHALL BE 3/8" THICK MATERIAL.
- CONTRACTION JOINTS SHALL BE PLACED AT 10' INTERVALS AND AT BOTH SIDES OF THE GRATE AT CATCH BASINS.
- 2" OF COMPACTED CRUSHED SURFACING TOP COURSE IS REQUIRED UNDER ALL CONCRETE.
- THE TOP, FACE, AND GUTTER SHALL BE BROOM FINISHED PARALLEL TO THE ROADWAY.
- A MINIMUM OF 10' SHALL BE REPLACED WHEN REPLACING PORTIONS OF EXISTING CURB.
- ALL CONSTRUCTION AND MATERIALS SHALL MEET THE CITY OF OTHELLO'S DESIGN STANDARDS AND BE APPROVED BY THE CITY.
- STAMP "SS" IN FACE OF CURB AT SEWER SERVICE, "W" FOR WATER, & "IR" IRRIGATION CROSSING LOCATIONS.
- A CURING AGENT IS REQUIRED TO BE APPLIED TO ALL EXPOSED SURFACES IMMEDIATELY AFTER BROOMING SURFACE.
- 2 - 12" #4 REBAR ARE REQUIRED AT ALL CURB CONNECTIONS TO EXISTING CURB. REBAR SHALL PENETRATE EXISTING CURB (6") SIX-INCHES AND EPOXY IN PLACE, WITH NO MASTIC, AS SHOWN ABOVE.

CITY OF OTHELLO
STANDARD DETAILS
TYPICAL CURB AND GUTTER
DETAIL A-3

#1	November, 2014
#2	June, 2016
#3	March, 2021
REVISION #	DATE



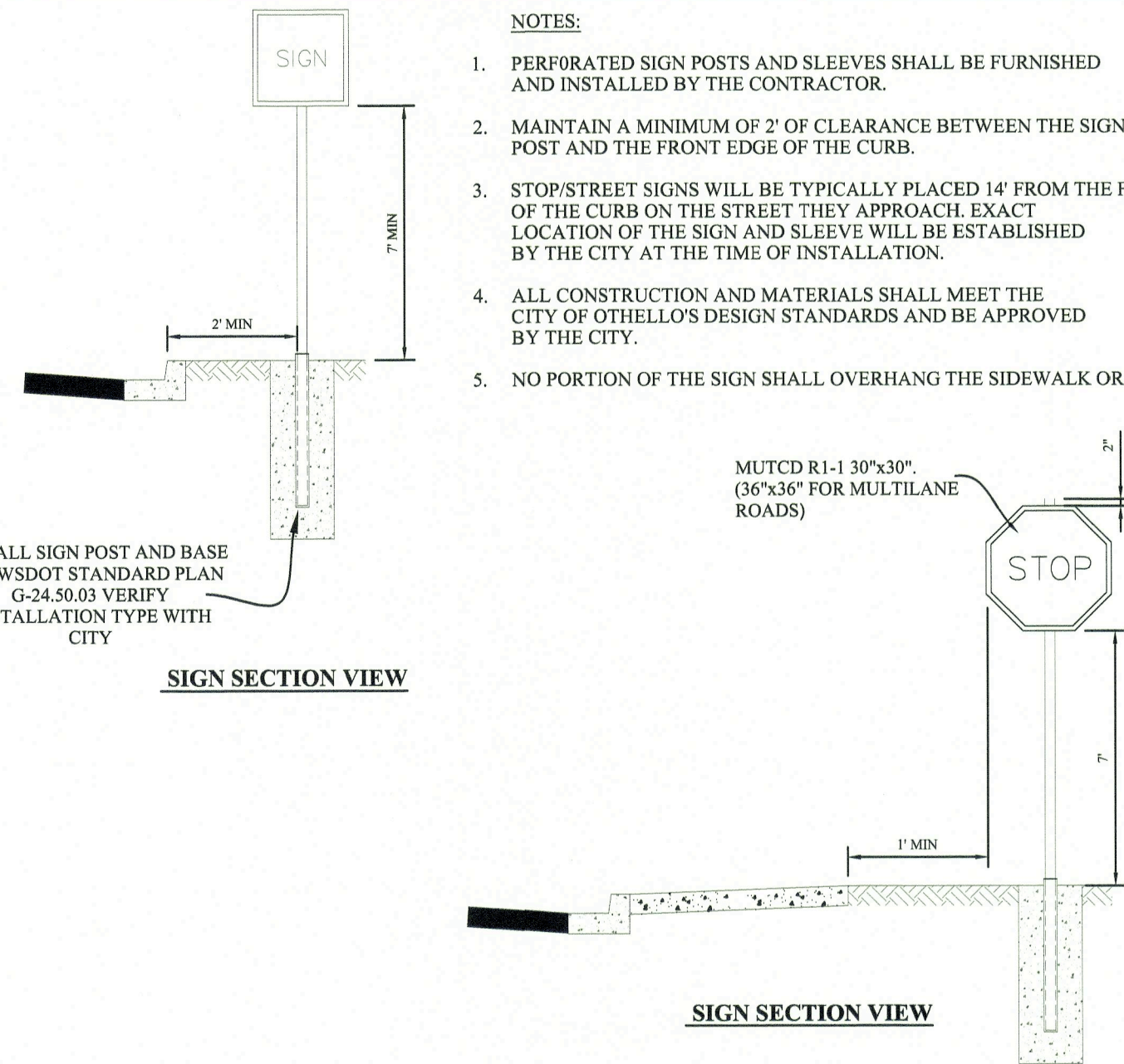
TYPICAL SIDEWALK

NOTES:

- CONTRACTION JOINTS SHALL BE PLACED PERPENDICULAR TO THE CURB AT 5' INTERVALS.
- FULL-DEPTH EXPANSION JOINTS SHALL BE PLACED PERPENDICULAR TO THE CURB AT 20' INTERVALS.
- PRE-MOLDED JOINT FILLER SHALL BE 3/8" THICK MATERIAL AND BE PLACED FULL DEPTH.
- SIDEWALK AND DRIVEWAYS SHALL BE BROOM FINISHED PERPENDICULAR TO THE CURB.
- MAINTAIN A MINIMUM OF 5' OF CLEARANCE FOR SIGN, MAILBOX, UTILITY POLE, OR ANY OTHER STRUCTURES WITHIN THE SIDEWALK.
- 2" OF COMPACTED CRUSHED SURFACING TOP COURSE IS REQUIRED UNDER ALL CONCRETE.
- MINIMUM SIDEWALK THICKNESS: 4" WHEN BEHIND TYPE "A" CEMENT CONCRETE TRAFFIC CURB AND GUTTER.
- 6" IN ALL DRIVEWAYS (TOP OF TAPER TO TOP OF TAPER).
- ALL CONSTRUCTION AND MATERIALS SHALL MEET THE CITY OF OTHELLO'S DESIGN STANDARDS AND BE APPROVED BY THE CITY OF OTHELLO.
- ALL CONCRETE TO BE CLASS 3,000, PER 3-14.2.
- A CURING AGENT IS REQUIRED TO BE APPLIED TO ALL EXPOSED SURFACES IMMEDIATELY AFTER BROOMING SURFACE.
- (3) THREE - 12" #4 REBAR ARE REQUIRED AT ALL SIDEWALK CONNECTIONS TO EXISTING SIDEWALK. REBAR SHALL PENETRATE EXISTING SIDEWALK (6") SIX-INCHES AND EPOXY IN PLACE, WITH NO MASTIC AT THIS LOCATION. LOCATION OF REBAR IS SHOWN ABOVE.

CITY OF OTHELLO
STANDARD DETAILS
TYPICAL SIDEWALK
DETAIL A-4

#1	November, 2014
#2	June, 2016
#3	February, 2018
#4	March, 2021
REVISION #	DATE



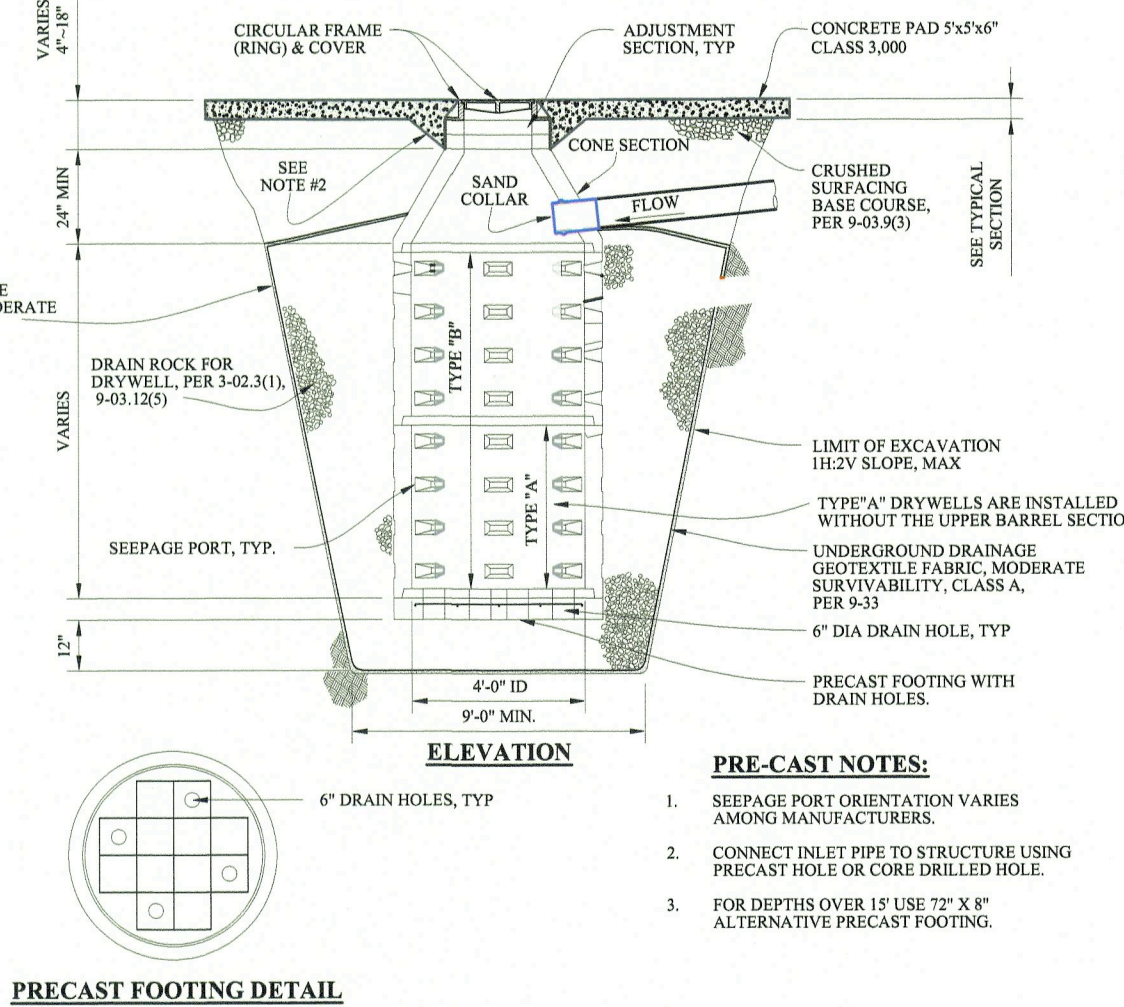
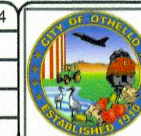
STOP/STREET SIGN INSTALLATION

NOTES:

- PERFORATED SIGN POSTS AND SLEEVES SHALL BE FURNISHED AND INSTALLED BY THE CONTRACTOR.
- MAINTAIN A MINIMUM OF 2' OF CLEARANCE BETWEEN THE SIGN POST AND THE FRONT EDGE OF THE CURB.
- STOP/STREET SIGNS WILL BE TYPICALLY PLACED 14' FROM THE FACE OF THE CURB ON THE STREET THEY APPROACH. EXACT LOCATION OF THE SIGN AND SLEEVE WILL BE ESTABLISHED BY THE CITY AT THE TIME OF INSTALLATION.
- ALL CONSTRUCTION AND MATERIALS SHALL MEET THE CITY OF OTHELLO'S DESIGN STANDARDS AND BE APPROVED BY THE CITY.
- NO PORTION OF THE SIGN SHALL OVERHANG THE SIDEWALK OR CURB.

CITY OF OTHELLO
STANDARD DETAILS
STOP/STREET SIGN INSTALLATION

#1	November, 2014
#2	June, 2016
#3	
REVISION #	DATE



PRE-CAST NOTES:

- SEEPAGE PORT ORIENTATION VARIES AMONG MANUFACTURERS.
- CONNECT INLET PIPE TO STRUCTURE USING PRECAST HOLE OR CORE DRILLED HOLE.
- FOR DEPTHS OVER 1' USE 2" X 8" ALTERNATIVE PRECAST FOOTING.

NOTES:

- MINIMUM OF 1 (one) 4" ADJUSTMENT RING WITH A MAXIMUM OF 16" OF ADJUSTMENT.
- PLACE CONCRETE AROUND OUTSIDE OF ADJUSTMENT RINGS AND RING TO PREVENT INFILTRATION/EXFILTRATION.
- PRECAST CONE SECTION MAY BE CONCENTRIC OR ECCENTRIC.
- GROUT SEAL PVC SAND COLLAR WHERE THE PIPE PENETRATES THE DRYWELL INSIDE AND OUTSIDE.
- DRYWELLS NOT IN SIDEWALK SHALL BE PLACED IN A 6x6" CONCRETE PAD AT FINISHED GRADE.
- "DRAIN" AND "CITY OF OTHELLO" SHALL BE CAST IN THE LID. FRAMES SHALL BE MODEL A-2000-R-1 BY D&L FOUNDRY AND COVERS SHALL BE MODEL A-2000-Z BY D&L FOUNDRY.
- ALL CONSTRUCTION AND MATERIALS SHALL MEET THE CITY OF OTHELLO'S DESIGN STANDARDS AND BE APPROVED BY THE CITY ENGINEER.

CITY OF OTHELLO
STANDARD DETAILS
48" PRECAST CONCRETE DRYWELL
DETAIL A-16

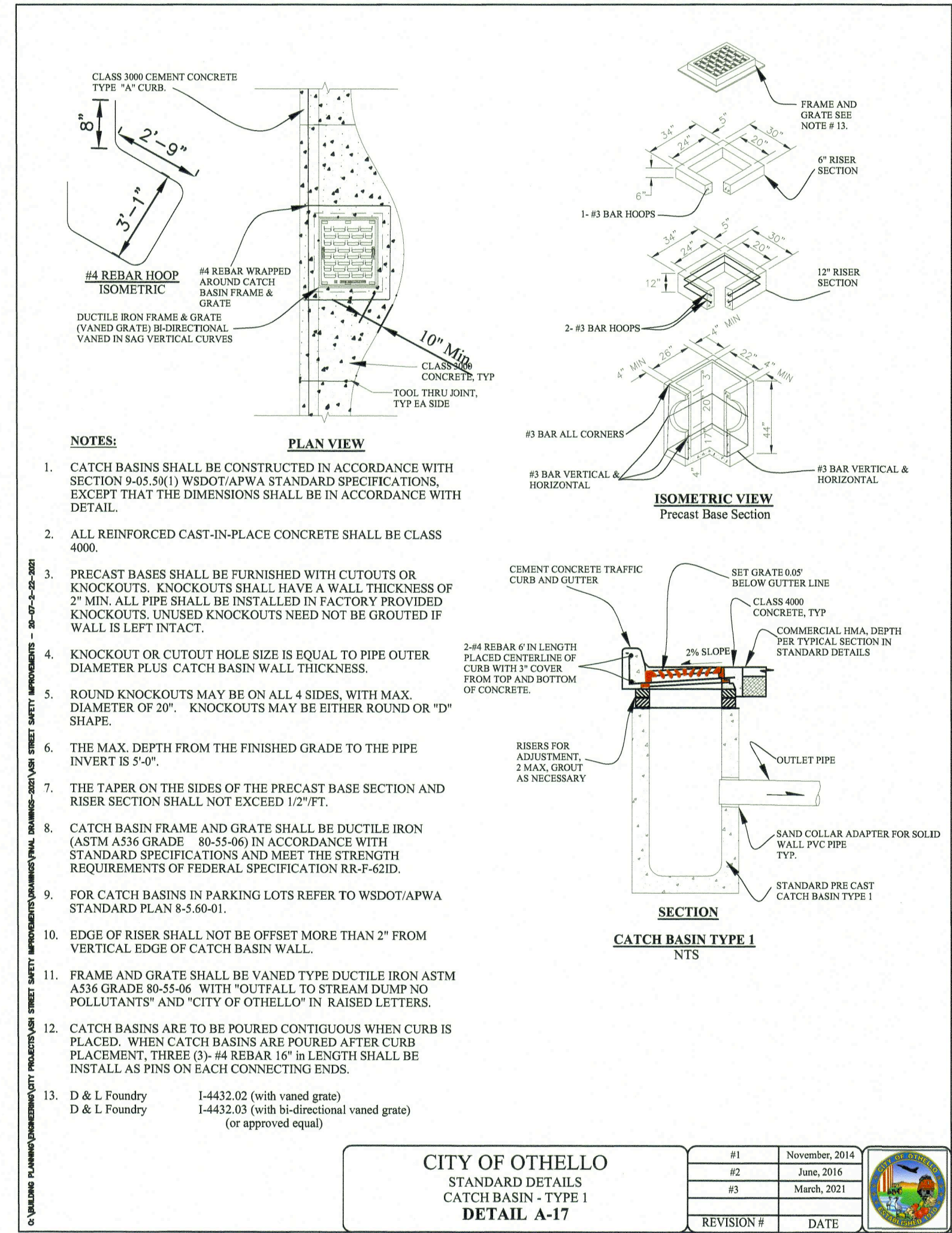
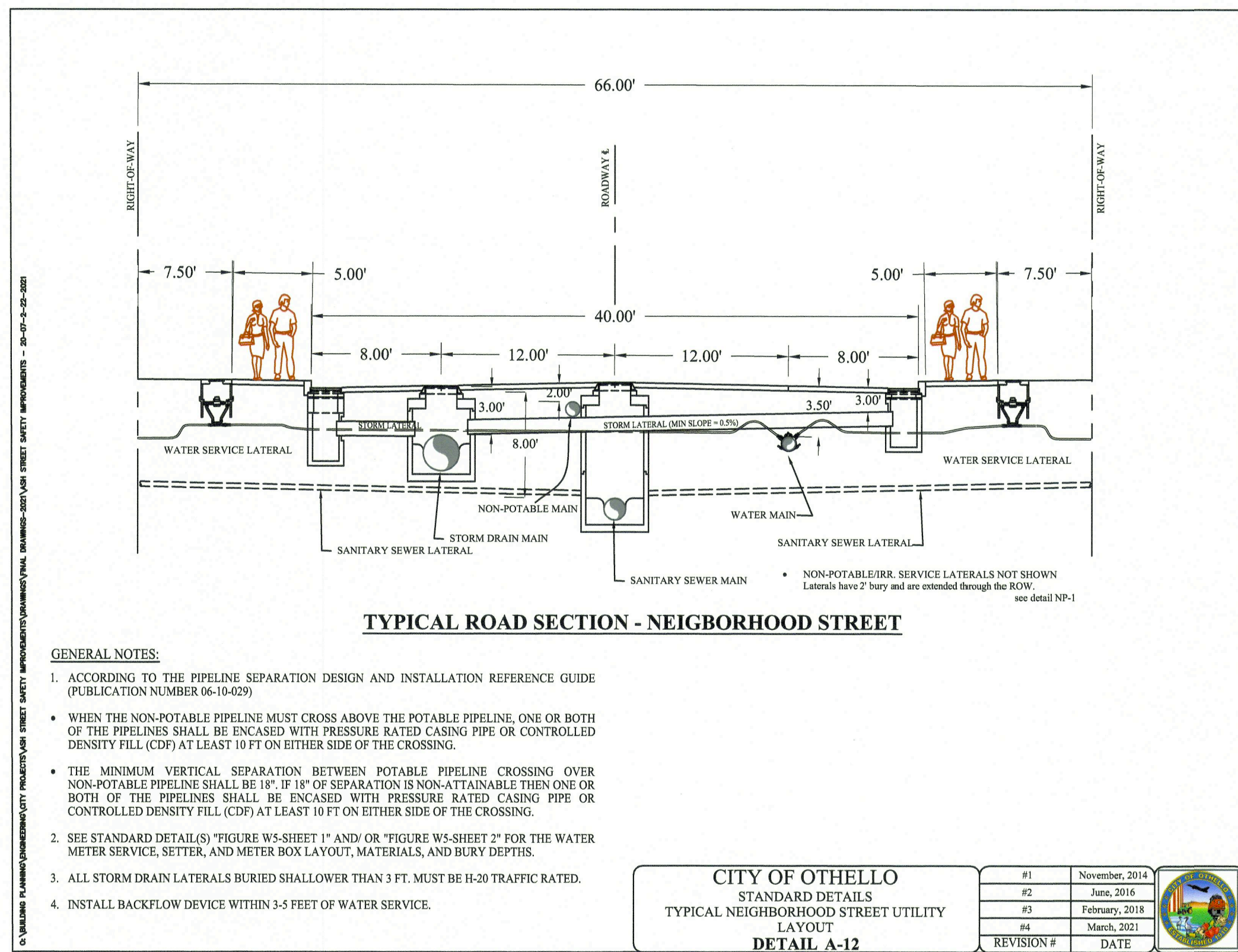
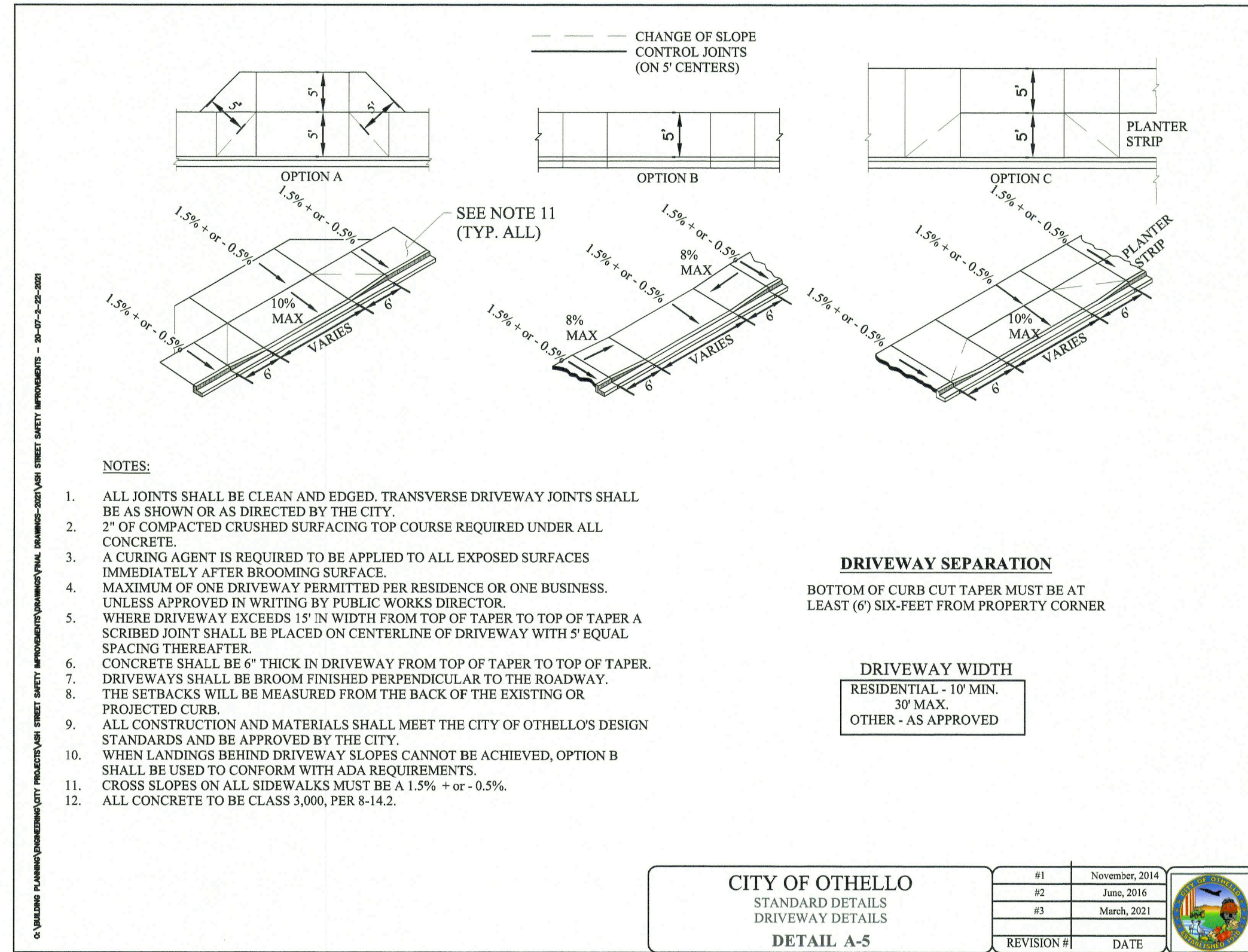
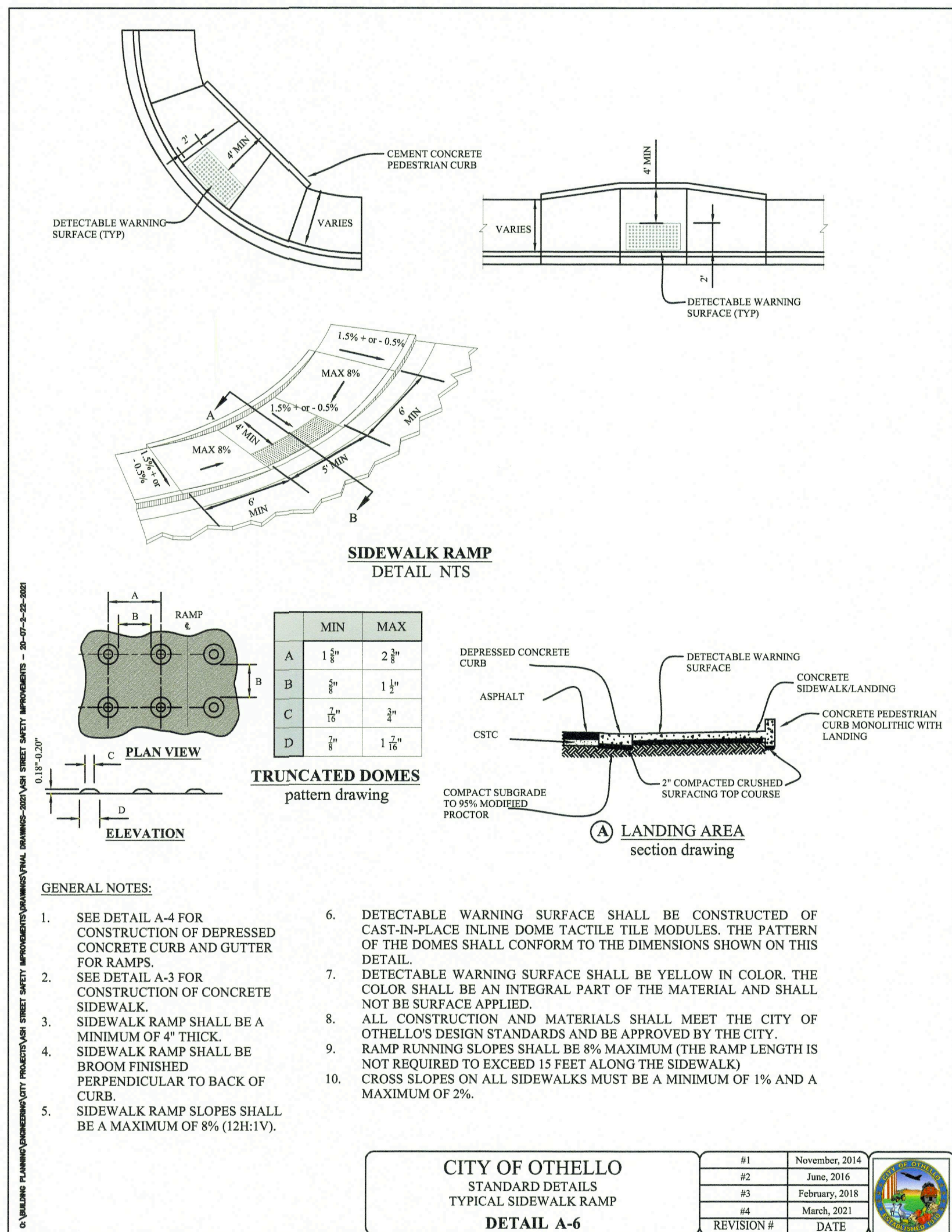
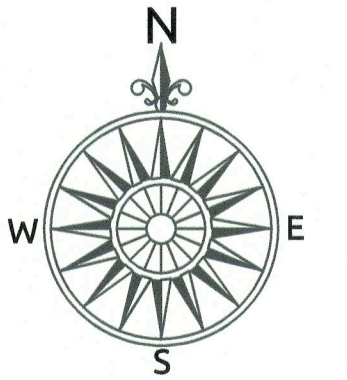
#1	November, 2014
#2	June, 2016
#3	
REVISION #	DATE



Inspection Requirements: (To be completed by City Engineering Department during construction)										Pressure Test		Inspection File: 20-07 Job File: 20-07 (To be completed by City Engineering Department during construction)						Construction Details									
Compaction										Accepted By:		Inspector		Testing Comment								Contractor Name					
Pressure Testing										Pressure:		Test Media:															
Subgrade CSTC										PSIG		Air															
95%										92%		N/A		psi		N/A		N/A									
Rev.#										Adenda #1 - added sheet-12&13 details and updated to 2021 PWDS										CJC		CJC		SMO		04/16/2021	
Rev.#										Revision Description										DR		STR		APP		Date	

City Of Othello 500 East Main Street Othello, Washington 99344				Ash Street Safety Improvements 2020	Pedestrian Bulb-Outs
Checked By: CJC	Date: 10/28/2020				
Approved By: SMO	Date: 10/28/2020				
DWG Scale: N/A	Unit/System: Imperial	AutoCAD File: Ash Street Safety Improvements-20-07			

Addenda. # 1	REV. # 1
Sheet 9	



Inspection Requirements:
(To be completed by City Engineering Department during construction)

Compaction		Pressure Testing						PT By:
Subgrade	Asphalt	SS	SD	PW	IRR		Other	
CSTC	HMA							
95%	92%	N/A	psi	N/A	N/A			

Pressure Test	
Accepted By:	
Pressure:	Test Media:
PSIG	Air

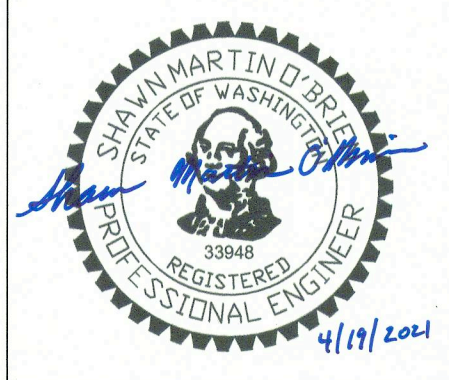
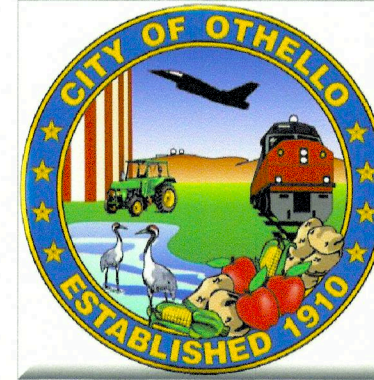
Inspection File: 20-07 Job File: 20-07
(To be completed by City Engineering Department during construction)

Inspector	Testing Comment	Contractor Name

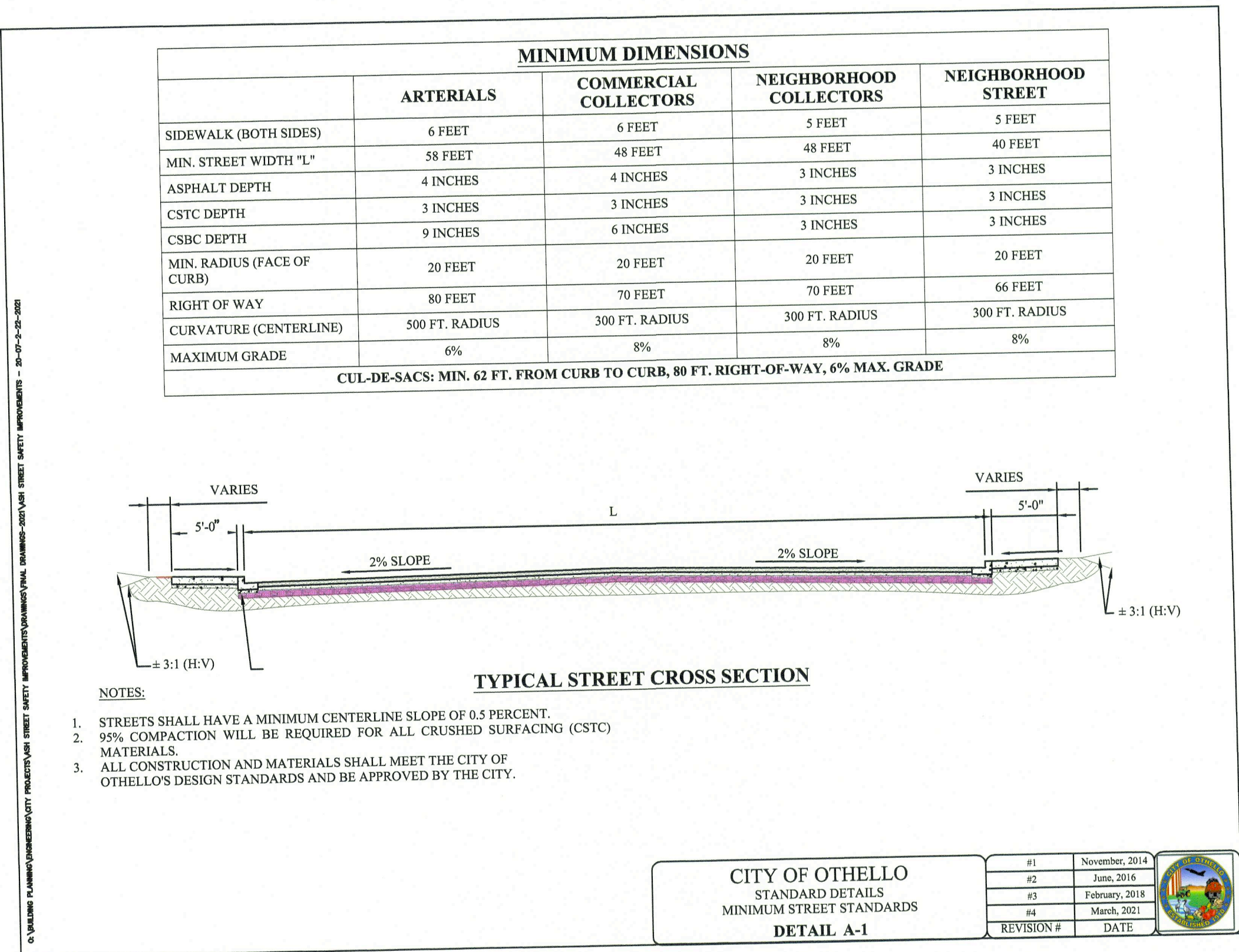
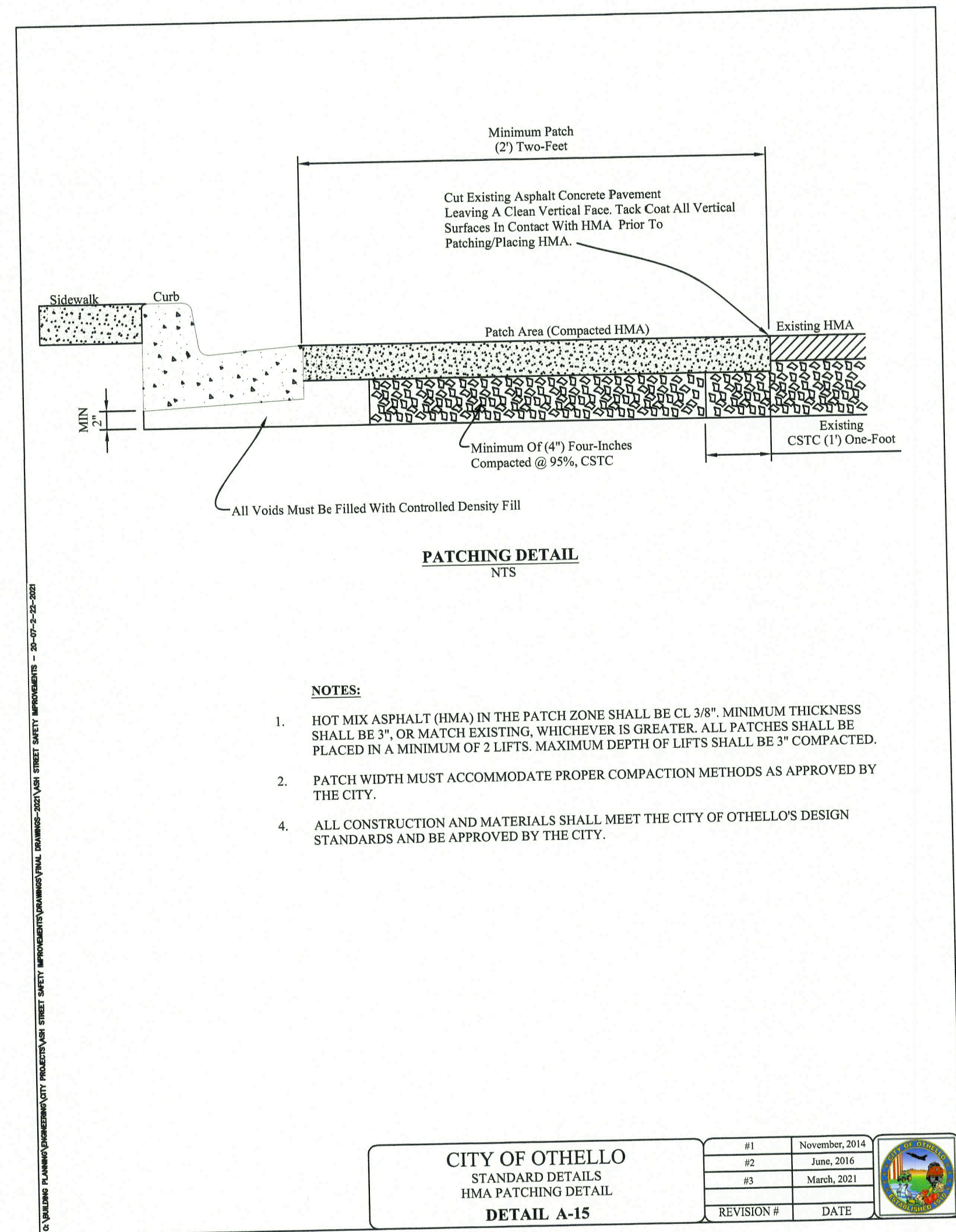
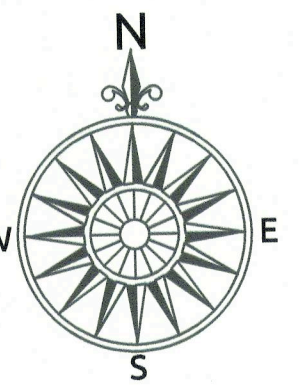


Rev.#	Adenda #1 - added sheet-12 & 13 details and updated to 2021 PWDS	CJC	CJC	SMO	04/16/2021
Rev.#	Revision Description	DR	STR	APP	Date

City Of Othello
500 East Main Street
Othello, Washington 99344



Ash Street Safety Improvements 2020		Pedestrian Bulb-Outs	
Checked By: CJC	Date: 10/28/2020	Addenda. # 1	REV. # 1
Approved By: SMO	Date: 10/28/2020		
DWG Scale: N/A	Unit/System: Imperial	AutoCAD File: Ash Street Safety Improvements-20-07	



Inspection Requirements: (To be completed by City Engineering Department during construction)										Pressure Test		Inspection File: 20-07 Job File: 20-07 (To be completed by City Engineering Department during construction)				Construction Details						
Compaction			Pressure Testing					PT	Accepted By:		Inspector	Testing Comment	Contractor Name									
Subgrade	Asphalt		SS	SD	PW	IRR		Other	By:	Pressure:	Test Media:											
95%	92%		N/A	psi	N/A	N/A				_ PSIG	Air											
Rev.#	Addenda #1 - added sheet-12&13 details and updated to 2021 PWDS										CJC	CJC	SMO	04/16/2021	<div>City Of Othello 500 East Main Street Othello, Washington 99344</div>  		Ash Street Safety Improvements 2020		Pedestrian Bulb-Outs	Addenda. # 1	REV. # 1	
																	Checked By: CJC	Date: 10/28/2020				
																	Approved By: SMO	Date: 10/28/2020				
Rev.#	Revision Description										DR	STR	APP	Date			DWG Scale: N/A	Unit/System: Imperial	AutoCAD File: Ash Street Safety Improvements-20-07		Sheet	13